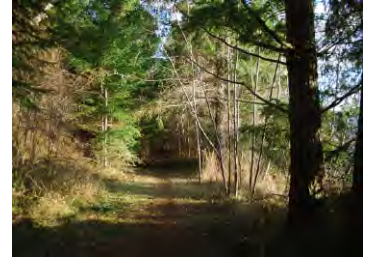


# Incredible Western Olympic Mountain and Sunset Views!



This trail is between the lot  
And Community beach.

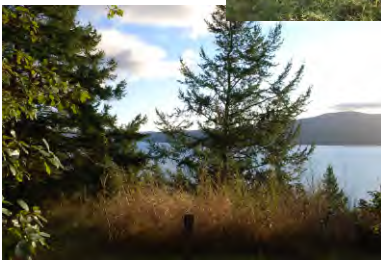
On the west side of the Quimper Peninsula we enjoy the most spectacular scenic views. Idyllic, quiet yet stunning. Big bold snow covered mountains with dots of fireplace smoke makes a dramatic drop down to the calm ice-blue of deep Discovery Bay.

Add at first light and end of day, strong slivers of coral as the sun rises and bright red morphing into lavender at twilight. And it is all yours from your big warm home that you adore and snuggle near the fire.

And this is ready for your home. Trim the trees, clear your building site and hook into the INSTALLED 3-bedroom septic system. Water tap is on the lot. Bring your plans.....



Access to Adelpma Beach through Private entrance.  
Trail below this lot to community Land (NOT to beach)



MLS 298231  
Lots 14 and 15 Cape George Road  
Ocean Grove  
Port Townsend, WA

Nancy Stelow 360-301-5308 or  
Susan Scott 360-744-2449  
all listings at [www.nancystelow.com](http://www.nancystelow.com)

