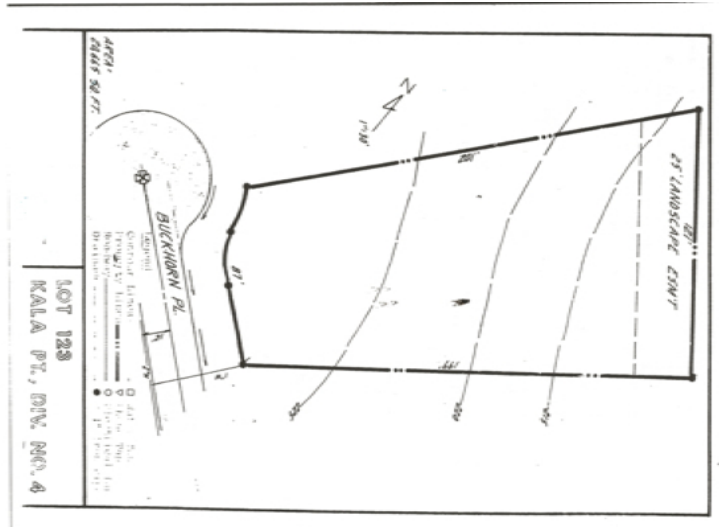


# Gorgeous! Gorgeous! Gorgeous!!!!

Just under 1/2 acre of level lot  
Beautifully treed and elegant ferns  
Underground utilities  
Electricity is at the lot along with  
Cable and water connection  
Area of 'conventional' septic drainfields



Beautiful Kala Point  
CCRs protect your investment  
Adjacent to Old Ft Townsend State Park  
Community beach  
Clubhouse  
Indoor-outdoor pool and, hot tub and sauna

MLS# 262063

Nancy Stelow  
Port Townsend, WA 98368  
360-385-1169

all listings at [www.nancystelow.com](http://www.nancystelow.com)



EXECUTIVE

