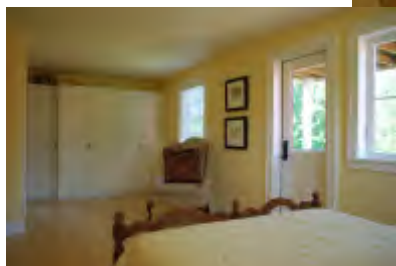
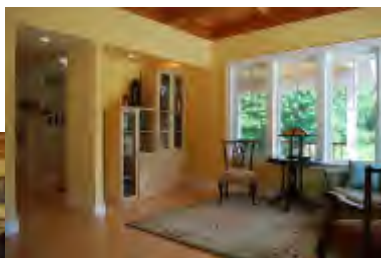


# Ross Chapin Designed Cottage-Adorable yet room for all your needs!!!

Quiet neighborhood within a bike ride to uptown.



- 3-bedroom home with beautiful attention to detail and efficiency.
- Energy star appliances, low voltage lighting, plumbed for additional solar panels, central vac.
- Radiant floor heat on lower floor.
- Motion-activated lighting on indoor stairway.
- Single level living with master on main.
- Open kitchen with great windows open to great patio



1014 Umatilla  
Port Townsend  
MLS# 118960



EXECUTIVE

Nancy Stelow or Susan Scott  
Port Townsend, WA 98368  
360-774-2449 or 360-301-5308  
all listings at [www.nancystelow.com](http://www.nancystelow.com)

